



## 6-12+ OSLIS Resources

<http://www.oslis.org>

Fall 2006



# http://www.oslis.org

OSLIS - Oregon School Library Information System - Microsoft Internet Explorer

File Edit View Favorites Tools Help

Address <http://www.oslis.org/index.php> Go

OSLIS Oregon School Library Information System

Home About OSLIS Site Map Site Help Contact Us

Bringing Information to Oregon Students

Announcements

- **New MLA Citation Maker available for testing during summer:** OEMA is pleased to invite you to test the **Beta (Test) Version of the new MLA Citation Maker**. You can also access the beta version from the **Main Site Links** navigation on top of the home page. The citation examples may not be complete, as changes are still being made over the summer. We look forward to your feedback. Also, stay tuned for the APA Citation Maker coming soon.
- **Expanded Quick Reference Links:** Check out the new **Quick Reference Links** page to help you research information on the web. Links to **Librarian's Index to the Internet**, **Multnomah County Library Homework Center** and **Open Directory Project** are now quickly available. These links are also now available from **Search the Web** which is available at the bottom of OSLIS pages.
- EBSCO databases on the OSLIS website were accessed 80,889 times in November, 2005 and 783,680 actual searches occurred during those sessions.
- **New Training Options:** Be sure to check out the tutorials in the green box on the right as well as the streaming videos online. Testimonials on how to check out an actual DVD or Video review.

Main Site Links

- Elementary School
  - Citation Maker
  - Test MLA Citation Maker
- Middle & High School
  - Citation Maker
  - Test MLA Citation Maker
- Librarians & Teachers

Tutorials

- Elementary School Overview (time: 1:40)
- Middle & High School Overview (time: 1:40)
- More tutorials.
- **OSLIS Training Videos**

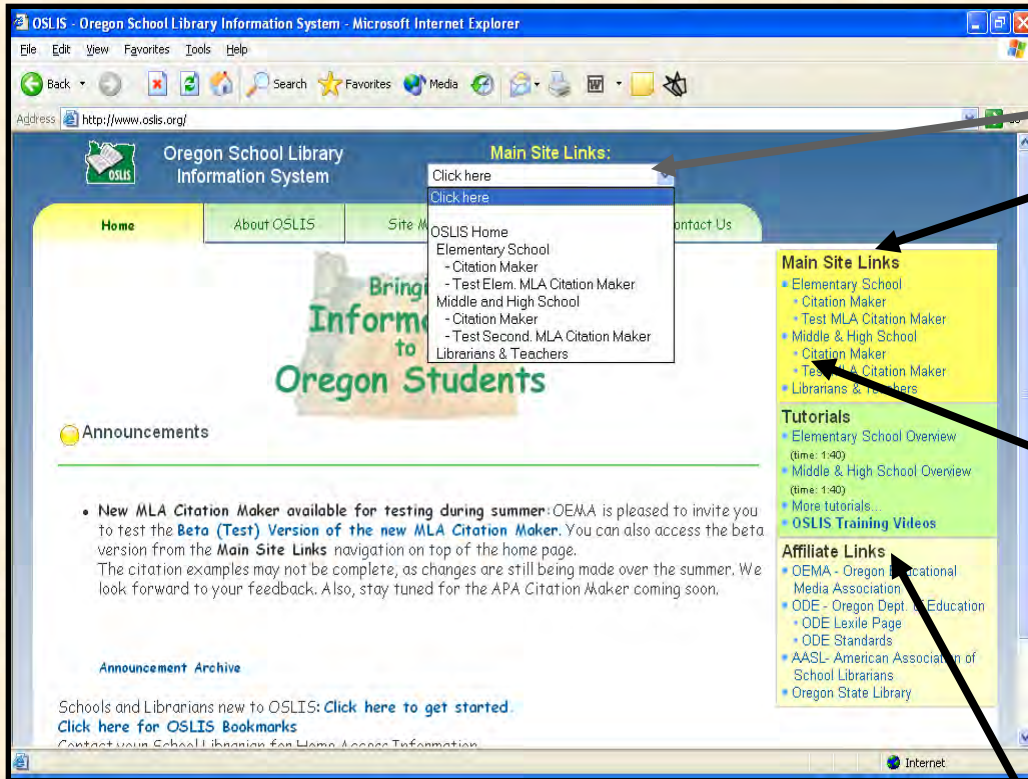
Affiliate Links

- OEMA - Oregon Educational Media Association
- ODE - Oregon Dept. of Education
  - ODE Lexile Page
  - ODE Standards
- AASL- American Association of School Librarians
- Oregon State Library

The OSLIS website provides access to online databases as well as support materials for their use.



# Homepage Support Resources



Level resources linked from both far right yellow box and the Main Site links box at the top.

Tutorials for new users in right green box. Videos go thru a full OSLIS training

Resources from affiliates too. ODE link to Lexiles is useful!





# Quick References

OSLIS - Oregon School Library Information System - Microsoft Internet Explorer

Address <http://www.oslis.org/>

## Announcements

- **New MLA Citation Maker available for testing during summer:** OSLIS is pleased to invite you to test the **Beta (Test) Version of the new MLA Citation Maker**. You can also access the beta version from the **Main Site Links** navigation on top of the home page. The citation examples may not be complete, as changes are still being made over the summer. We look forward to your feedback. Also, stay tuned for the **APA Citation Maker** coming soon.
- **Expanded Quick Reference Links:** Check out the new **Quick Reference Links** page to help you research information on the web. Links to **Librarian's Index to the Internet**, **Multnomah County Library Homework Center** and **Open Directory Project** are now quickly available. These links are also now available from **Search the Web** which is available at the bottom of OSLIS pages.
- **EBSCO databases** on the OSLIS website were accessed 80,889 times in November, 2005 and 783,680 actual searches occurred during those sessions.
- **New Training Options:** Be sure to check out the tutorials in the green box on the right as well as the streaming videos online. **Instructions on how to checkout an actual DVD or video** to view or copy are located in the Announcement Archive below under the **10/19/05** message.

[Announcement Archive](#)

Schools and Librarians new to OSLIS: [Click here to get started.](#)  
[Click here for OSLIS Bookmarks](#)  
Contact your School Librarian for Home Access Information.

Home | Site Map | Contact Us | © 2006 OSLIS

The Oregon School Library Information System is published with funding provided by the Oregon State Library under the Library Services and Technology Act, State Administered Program, P.L. 104-208. For more information about OSLIS, contact [osliswebmaster@school.washington.edu](mailto:osliswebmaster@school.washington.edu).

The Announcement Archive has the OSLIST listserv messages about OSLIS.

The Search OSLIS box will search the website for lessons/resources such as notetaking...(note taking), essential questions, presentations, collaboration.

# Secondary Focus

OSLIS - Oregon School Library Information System - Microsoft Internet Explorer

Address: http://www.oslis.org/index.php

Oregon School Library Information System

Main Site Links:

- Click here
- Click here
- OSLIS Home
- Elementary School
  - Citation Maker
  - Test Elem. MLA Citation Maker
- Middle and High School
  - Citation Maker
  - Test Second. MLA Citation Maker
- Librarians & Teachers

Bring Information to Oregon Students

Announcements

- New MLA Citation Maker available for testing during summer: OEMA is pleased to invite you to test the Beta (Test) Version of the new MLA Citation Maker. You can also access the beta version from the Main Site Links navigation on top of the home page. The citation examples may not be complete, as changes are still being made over the summer. We look forward to your feedback. Also, stay tuned for the APA Citation Maker coming soon.
- Expanded Quick Reference Links: Check out the new Quick Reference Links page to help you research information on the web. Links to Librarian's Index to the Internet, Multnomah County Library Homework Center and Open Directory Project are now quickly available. These links are also now available from Search the Web which is available at the bottom of OSLIS pages.
- EBSCO databases on the OSLIS website were accessed 80,889 times in November, 2005 and 783,680 actual searches occurred during those sessions.
- New Training Options: Be sure to check out the tutorials in the green box on the right as well as the streaming videos online. Test tutorials on how to checkout an actual DVD or Video tutorial.

Use either the drop down box or the yellow box to access **Secondary Resources**

OSLIS - Oregon School Library Information System - Microsoft Internet Explorer

Address: http://www.oslis.org/secondary/index.php

Oregon School Library Information System

Main Site Links: Click here

Mid High School Home Research Process Search Strategies Gathering & Organizing Beyond Surfing Evaluating Information Citing Sources Presenting Results Online Tools

Welcome to Middle and High School OSLIS

- Research Process: Plan your research, locate the best sources, and put it all together
- Search Strategies: What to do first, ways to search, Boolean operators, self-check
- Gathering & Organizing Information: Take good research notes and avoid plagiarism in the process
- Beyond Surfing: Tips on using some of the popular search engines and directories
- Evaluating Information: Critically evaluate the information you find on the Web
- Citing Sources: When and how to cite references; interactive Citation Maker
- Presenting Results: Some of the many different ways you can present your project
- Online Tools: Viewing, printing, saving online reference material, self-check

Contact your School Librarian for Home Access Information.

Home | Site Map | Contact Us | © 2006 oslis

Search OSLIS Search the Web

Student Resources

Start here ↓

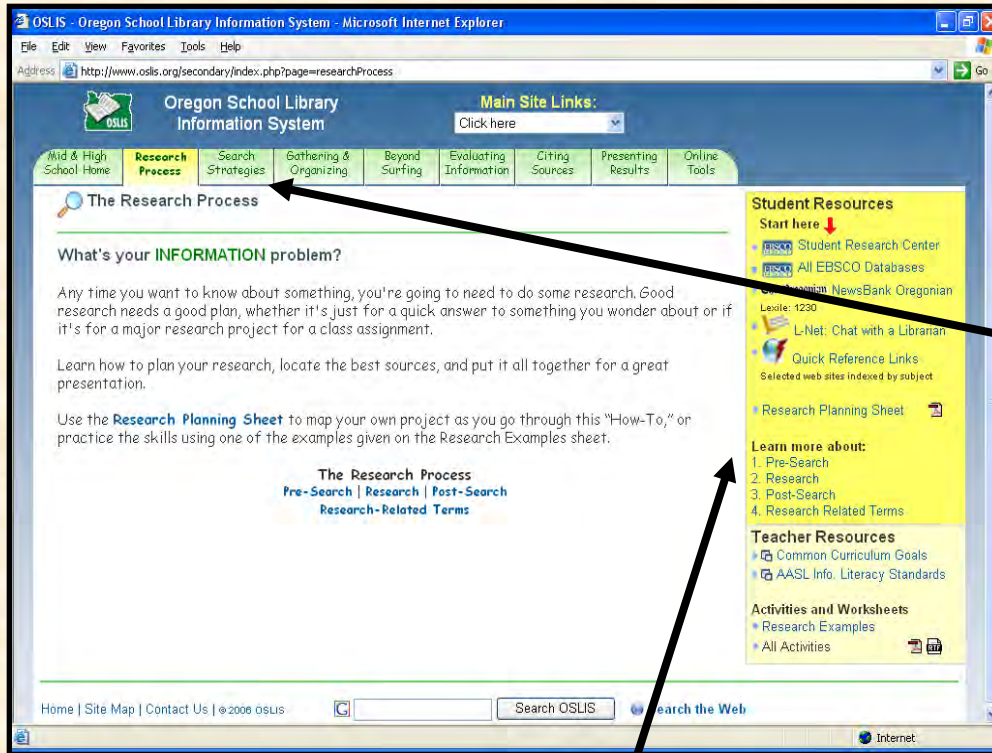
- Student Research Center
- All EBSCO Databases
- The Oregonian NewsBank Oregonian Lexile: 1230
- L-Net: Chat with a Librarian
- Quick Reference Links

Selected web sites indexed by subject

BTW The map at the top of the page always links back to the homepage.



# Student Resources



The tabs at the top include lessons, tutorials and quizzes in a variety of formats to help students in their quest for information.

The links in the right box below L-Net go to an incredible wealth of teacher resources to support the Information Literacy topic on that tab. **Check these out!!!**

# Bibliographies Made Easy

OSLIS - Oregon School Library Information System - Microsoft Internet Explorer

Address: <http://www.oslis.org/secondary/index.php?page=citeSources>

Oregon School Library Information System

Main Site Links: Click here

Mid & High School Home | Research Process | Search Strategies | Gathering & Organizing | Beyond Surfing | Evaluating Information | **Citing Sources** | Presenting Results | Online Tools

**Citing Sources** (based on MLA style)

[Click here to use Citation Maker](#)

Citing means stating exactly from where information and ideas come. Remember that citing your sources not only gives credit to the ideas of others, it adds veracity (truth) to your research and readings.

The following PDF files contain example citations for all types of sources, from books to online images. They show the most essential information to record as you go through the research process. All examples and documents found in "Citing Sources" follow **MLA style**. Download and print them for reference:

Print | Electronic/CD-ROM | Internet/Online DB | Miscellaneous

Besides the momentous task of creating exciting research, it is important to understand:

**When to Cite**  
**Plagiarism**  
**Paraphrasing Citations**  
**Quoting, Paraphrasing, and Summarizing**  
**Note Taking Skills**  
**Citation Worksheet**  
**General Guidelines for a "Works Cited"**  
**Report Writing Mechanics**

When the research is complete, it is imperative to create a clear and accurate Works Cited page. To simplify this often difficult and tedious task, OSLIS has devised a simple interactive **Citation Maker**. It includes the most common types of sources and is easy to use. For types of sources not included in the Citation Maker, you may use the PDF examples.

Student Resources  
Start here ↓

- EBSCO Student Research Center
- EBSCO All EBSCO Databases
- The Oregonian NewsBank Oregonian Lexile: 1230
- L-Net: Chat with a Librarian
- Quick Reference Links

Learn more about:

- When to Cite
- Plagiarism
- Paraphrasing Citations
- Quote, Paraphrase
- Note Taking Skills
- Citation Works
- General Guide
- Report Writing
- Sample Works

Teacher Resources

- Common Core
- AASL Info. Literacy

Activities and Web

**Citation Maker** allows users to create their bibliographies online with all the appropriate coding inserted automatically.

OSLIS :: MLA Citation Maker :: Secondary - Microsoft Internet Explorer

Address: <http://www.oslis.org/MLACitations%5Ftest/secondary/index.php>

Oregon School Library Information System

Mid & High School Home | Research Process | Search Strategies | Gathering & Organizing | Beyond Surfing | Evaluating Information | **Citing Sources** | Presenting Results | Online Tools

MLA Secondary Citation Maker

You have 0 citations

**OSLIS Secondary Citation Form (MLA)**

Welcome to the OSLIS Secondary MLA Citation Maker.

Please choose a source type (Print or Electronic) then a resource.

Return to OSLIS MLA Citation Home

Source Type  
Print  
Electronic

Citation Resources  
Citation Worksheet

Home | Site Map | Contact Us | ©2008 oslis | Search OSLIS | Search the Web

Available in MLA or APA format on the secondary site and MLA on the elementary site.



# Print Citation Worksheet

for your students so they can write down their citations in the correct format and order. When they are ready to create their bibliography with **Citation Maker**, it will then be a simple task to type in the data.

The screenshot shows a Microsoft Internet Explorer window displaying a PDF document titled "Citation Worksheet". The browser's address bar shows the URL "http://www.oslis.org/docs/citewrksht.pdf". The worksheet contains several sections for different types of citations, each with a corresponding table for data entry.

**Citation Worksheet**

**Print Encyclopedia:**

Author (last name, first name) if given.	"Article Title."	Title of Encyclopedia.	Edition year.
			ed.
			ed.
			ed.

**Electronic Encyclopedia on CD ROM:**

"Article Title."	Title of Encyclopedia.	Source.	Publisher.	Year.
		CD-ROM		

**Encyclopedia Article on the Web:**

Author(s).	"Article Title."	Title of Encyclopedia.	Date accessed	<URL>.

**Book:**

Author(s)	Title of Book.	City:	Publisher.	Year.

**Reference Book:**

Author(s) or Editor(s).	"Chapter."	Title of Reference Book.	City.	Publisher.	Year.

The browser window also shows a status bar at the bottom with "Done" and "Internet" indicators, and a page navigation bar indicating "1 of 2" pages.



# Online Resources

Through a partnership between the [Oregon State Library](#) and [The Oregon Department of Education](#), all K-12 educators and students now have access to the same full menu of databases as students at Oregon Academic Universities, Community Colleges, And Public Libraries through the OS LIS website.





# OSLIS Online Resources

OSLIS provides you and your students online access **both at school and from home**. Be sure to check with your school library for your username and password for remote access.

Home Access:

EBSCO Student Research Center - Microsoft Internet Explorer

Address: [http://www.oslis.org/framesets/ebSCO\\_NoIP\\_SRC\\_Frameset.php](http://www.oslis.org/framesets/ebSCO_NoIP_SRC_Frameset.php)

Main Site Links: Click here Print Search Results

Oregon School Library Information System

EBSCO HOST Research Databases Athens Users Login

Support & Training

Login

User ID

Password

Login

Minimum browser requirements:  
Internet Explorer 5.5+, Netscape 7.0+, Firefox 1.01, Safari 1.x

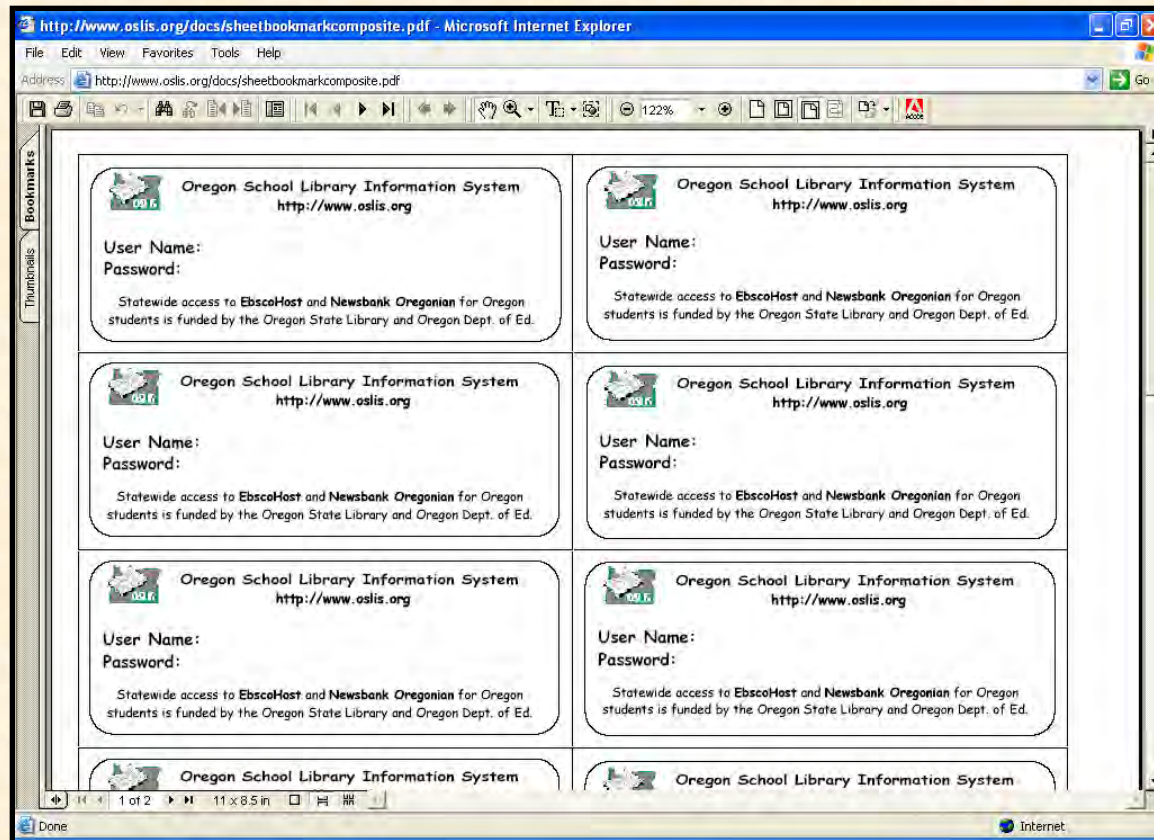
**Important User Information:** Remote access to EBSCO's databases is permitted to patrons of subscribing institutions accessing from remote locations for personal, non-commercial use. However, remote access to EBSCO's databases from non-subscribing institutions is not allowed if the purpose of the use is for commercial gain through cost reduction or avoidance for a non-subscribing institution. Remote access for personal use from these institutions is permissible.

© 2006 EBSCO Publishing - [Privacy Policy](#) - [Terms of Use](#) - [EBSCOhost Connection](#)



# Bookmarks

**Bookmark** masters are available on the OSLIS website to print for your students. You can **add** the username and password before printing. Do not place this information on the web please!





# Secondary Database Access

Access online databases via the  
**Middle & High School** page link.

OSLIS - Oregon School Library Information System - Microsoft Internet Explorer

Address: http://www.oslis.org/

Oregon School Library Information System

Main Site Links

Click here

Home About OSLIS Site Map Site Help Contact Us

Bringing Information to Oregon Students

Announcements

- **New MLA Citation Maker available for testing during summer:** OEMA is pleased to invite you to test the **Beta (Test) Version of the new MLA Citation Maker**. You can also access the beta version from the **Main Site Links** navigation on top of the home page. The citation examples may not be complete, as changes are still being made over the summer. We look forward to your feedback. Also, stay tuned for the APA Citation Maker coming soon.
- **Expanded Quick Reference Links:** Check out the new **Quick Reference Links** page to help you research information on the web. Links to **Librarian's Index to the Internet**, **Multnomah County Library Homework Center** and **Open Directory Project** are now quickly available. These links are also now available from **Search the Web** which is available at the bottom of OSLIS pages.
- EBSCO databases on the OSLIS website were accessed 80,889 times in November, 2005 and 783,680 actual searches occurred during those sessions.

**Main Site Links**

- Elementary School
  - Citation Maker
  - Test MLA Citation Maker
- **Middle & High School**
  - Citation Maker
  - Test MLA Citation Maker
- Librarians & Teachers

**Tutorials**

- Elementary School Overview (time: 1:40)
- Middle & High School Overview (time: 1:40)
- More tutorials...
- **OSLIS Training Videos**

**Affiliate Links**

- OEMA - Oregon Educational Media Association
- ODE - Oregon Dept. of Education
  - ODE Lexile Page
  - ODE Standards
- AASL - American Association of School Librarians
- Oregon State Library



# Student Research Center

SRC is the interface linked to appropriate databases for MS/HS students.

OSLIS - Oregon School Library Information System - Microsoft Internet Explorer

File Edit View Favorites Tools Help

Address http://www.oslis.org/secondary/index.php

**Oregon School Library Information System**

Main Site Links: Click here

Mid & High School Home Research Process Search Strategies Gathering & Organizing Information Beyond Surfing Evaluating Information Citing Sources Presenting Results Online Tools

Welcome to Middle and High School OSLIS

- Research Process**  
Plan your research, locate the best sources, and put it all together
- Search Strategies**  
What to do first, ways to search, Boolean operators, self-check
- Gathering & Organizing Information**  
Take good research notes and avoid plagiarism in the process
- Beyond Surfing**  
Tips on using some of the popular search engines and directories
- Evaluating Information**  
Critically evaluate the information you find on the Web
- Citing Sources**  
When and how to cite references; interactive **Citation Maker**
- Presenting Results**  
Some of the many different ways you can present your project
- Online Tools**  
Viewing, printing, saving online reference material, self-check

Contact your School Librarian for Home Access Information.

Home | Site Map | Contact Us | ©2008 OSLIS

Search OSLIS Search the Web

Done Internet

**Student Resources**

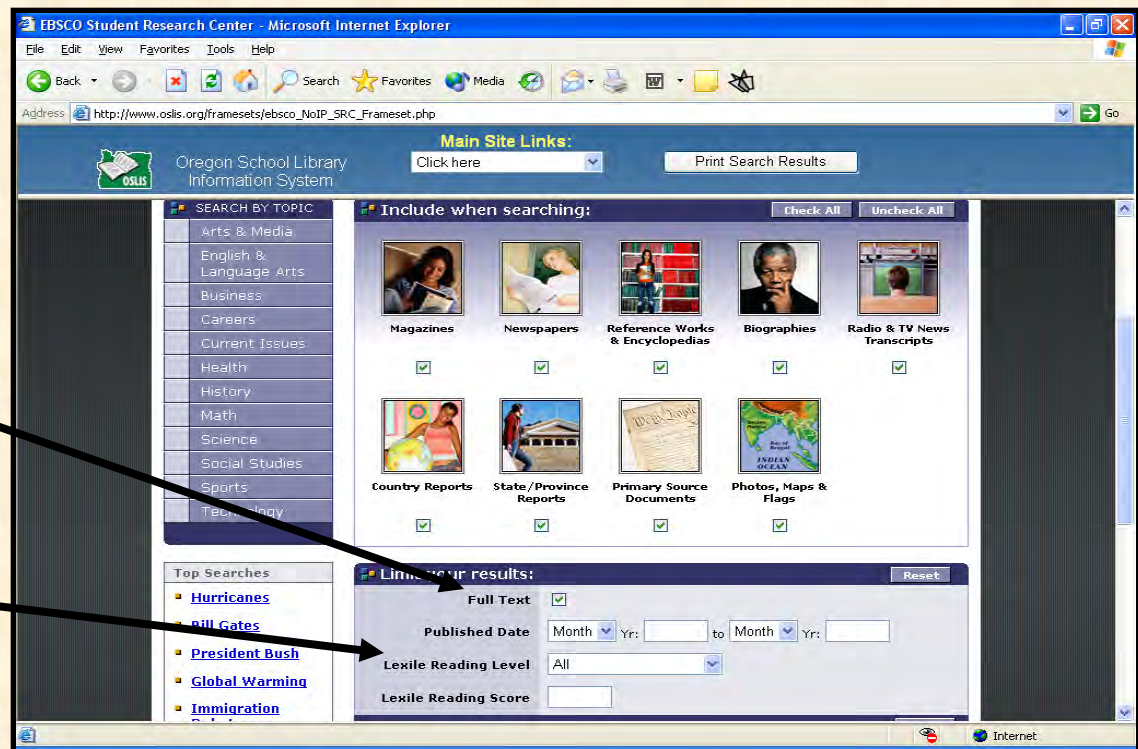
Start here ↓

- EBSCO Student Research Center
- EBSCO All EBSCO Databases
- The Oregonian NewsBank Oregonian  
Lexile: 1230
- L-Net: Chat with a Librarian
- Quick Reference Links  
Selected web sites indexed by subject



# Student Research Center

This interface is the access point to the most used databases for grades 6+.



Be sure Full Text is selected.

Lexile scores can be entered here from the main search screen. This allows the user to keep the returned articles near their reading level.

Great for struggling readers, ESL students, and advanced students.



# SRC Results

are listed by **DATE**. You can switch this to **RELEVANCE** if that is more appropriate.

Student Research Center - Microsoft Internet Explorer  
Address: http://www.oslis.org/framesets/ebasco/SRC\_Frameset.php

Oregon School Library Information System

Main Site Links: Click here Print Search Results

Filter results by:

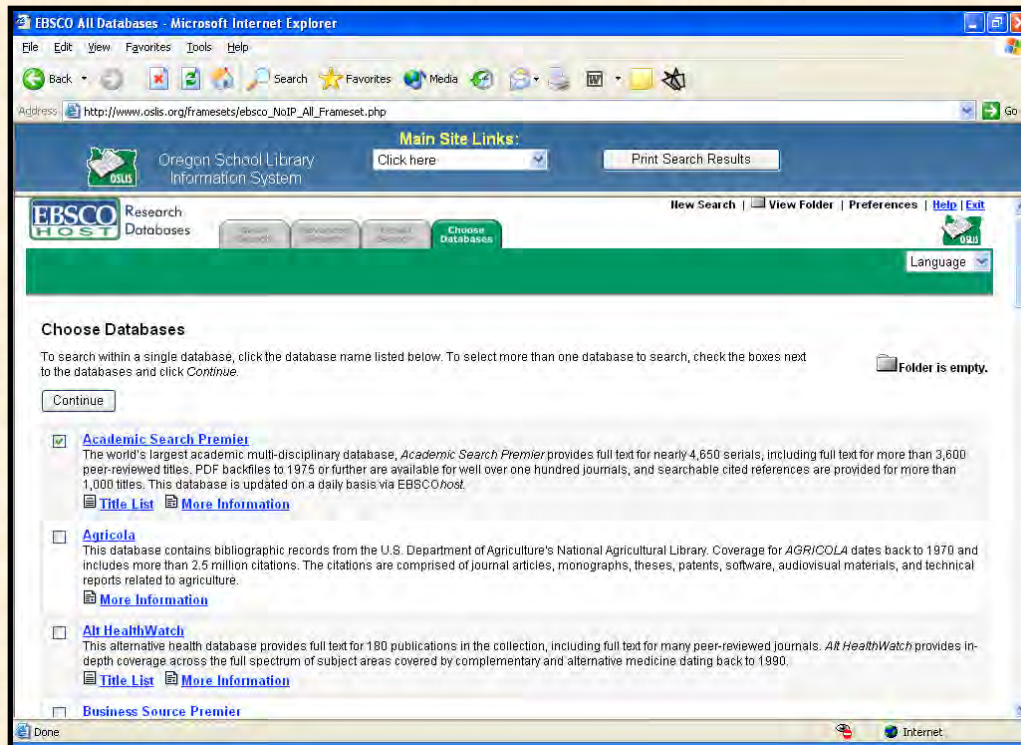
- All Results
- Magazines
- Newspapers
- Reference Works & Encyclopedias
- Biographies
- Radio & TV News Transcripts
- State/Province Reports
- Primary Source Documents
- Photos

All Results: 1-10 of 2492 Page: 1 2 3 4 5 Next Sort by: Date (dropdown menu open showing Date, Relevance, Date) Add (1-10)

- Canyoneering 201**. Backpacker, Aug2006, Vol. 34 Issue 6, p59-59, 2/3p, 3c; Reading Level (Lexile): **1080**; (AN 21381664)  
[HTML Full Text](#) [Add](#)
- Attorney General Curran offers tips to prepare for hurricane season**  
M2PressWIRE, 07/11/2006; (AN 16PU709095128)  
[HTML Full Text](#) [Add](#)
- Today's forecast: Big sunburn risk: Extreme UV levels increase skin cancer danger** By: and Danica Coto, Steve Lyttle. Charlotte Observer, The (NC), 07/11/2006; (AN 2W62W6151723073)  
[HTML Full Text](#) [Add](#)



# All Databases



To access specific database groups, from the OSLIS middle/high page select the **All Database** link then check the ones that you wish to search.

(Be sure to uncheck **Academic Premier** if you don't want to use it.)

This is also where you can access the list of titles within each database.



# Search Options

Users can search by Basic or Advanced options as well as Visual Search.

EBSCO All Databases - Microsoft Internet Explorer

File Edit View Favorites Tools Help

Address [http://www.oslis.org/framesets/ebSCO\\_NoIP\\_All\\_Frameset.php](http://www.oslis.org/framesets/ebSCO_NoIP_All_Frameset.php)

Main Site Links: [Click here](#) [Print Search Results](#)

OSLIS Oregon School Library Information System

EBSCO HOST Databases

Sign In to My EBSCOhost

Basic Search Advanced Search Visual Search Choose Databases

Keyword Publications Subject Terms Indexes Cited References Images Language

Find:  Search Clear ?

in [Academic Search Premier](#) [Folder is empty.](#)

Refine Search [Advanced](#)

Limit your results: [Limiters](#) [Expanders](#) [Reset](#)

Full Text

References Available

Scholarly (Peer Reviewed) Journals

Published Date [Month](#) Yr:  to [Month](#) Yr:

Publication

Publication Type [All](#)

Number Of Pages [All](#)

Articles With Images [All](#)

Expand your search to: [Limiters](#) [Expanders](#) [Reset](#)

Also search for related words

Applet com.groxis.product.ebsco.applet.EBSCOApplet started

Internet



# Visual Search

EBSCO Student Research Center - Microsoft Internet Explorer

Address: [http://www.oslis.org/frameSETS/ebSCO\\_NoIP\\_SRC\\_FrameSet.php](http://www.oslis.org/frameSETS/ebSCO_NoIP_SRC_FrameSet.php)

OSLIS Oregon School Library Information System

Main Site Links: Click here Print Search Results

EBSCOhost Databases Basic Search Advanced Search **Visual Search** Choose Databases Select another EBSCO service

Sign in to My EBSCOhost Keyword Language

Find: "global warming" Search Clear

in MAS Ultra - School Edition

Show Filters Show Results Thinkers

New to Visual Search? Take our tour.

### EBSCOhost Visual Search

EBSCOhost Visual Search is easy to use:

Visual Search allows you to search efficiently across broad subject areas and then returns a visual map of results, organized by category.

Enter search term in the Find field above and click Search. A visual map is presented and contains:

- **Circles**, which represent categories of results. Categories can include subcategory circles. Click on a circle (category) to explore its contents.
- **Squares**, which represent links to articles. Click on a square to load the article into this pane.

To move back (or up) in the map, click outside of a circle or square. Click on **Top** to view the entire map.

Atmospheric Tem...  
Changes Global...  
United States  
Climatic Changes

Appllet.com.grovis.product.ebsco.appllet.EBSCOAppllet started

The **Visual Search** tab at the top of the search menu has proven to be quite useful for student searching.

(This option will be implemented in SRC this Fall.)



# EBSCO Tutorials

EBSCO has short video tutorials to help you with specialized tools, creating folders, journal alerts, etc. These are found in OSLIS [Site Help](#), then [EBSCO](#) link, and finally [Online Tutorials](#) at

<http://support.epnet.com/training/tutorials.php>

then [Ebscohost](#) tutorials. (The ALL DATABASES tutorial is the K-12 one.)

By using [personal folders](#) students can accumulate relevant articles to access at home or at school rather than printing or emailing all of them.

EBSCO  
SUPPORT

Search This Site

KNOWLEDGE BASE TRAINING SUPPORT NEWS CUSTOMER SUCCESS CONTACT US E-Mail Support | Sign Up For Training

Training Tutorials Additional Resources

### Tutorials

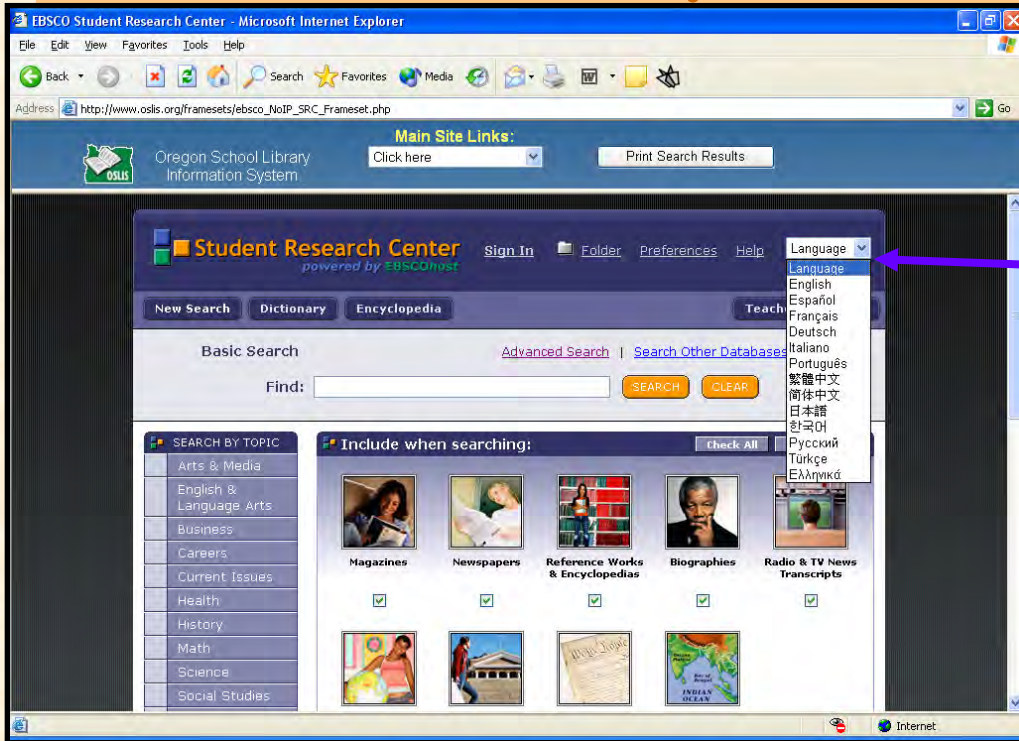
Need a quick, efficient training tool? Our Macromedia Flash tutorials provide audio narration with matching text to guide users on how to make the most of EBSCO's most popular features. Most tutorials are under four minutes long.

EBSCOhost Tutorials

- Basic Searching for Academic Libraries (runtime 3.4 minutes)
- Recherche de base en français (runtime 4.36 minutes)
- Búsqueda Básica para Bibliotecas Académicas (runtime 4.10 minutes)
- Búsqueda Básica para Bibliotecas Académicas Interactivo
- Búsqueda Avanzada para Bibliotecas Académicas
- Búsqueda Visual para Bibliotecas Académicas
- Basic Searching for K-12 School Libraries (runtime 3 minutes)
- Basic Searching for Public Libraries (runtime 4 minutes)
- Basic Searching for Corporate Users (runtime 3.25 minutes)
- How to Create Search and Journal Alerts (runtime 3 minutes)
- Advanced Search with Single Find Field; Creating Search and Journal Alerts (runtime 3 minutes)
- Advanced Search with Guided Style (runtime 4 minutes)
- The My EBSCOhost Personalization Folder (runtime 3.45 minutes)
- Page Composer (runtime 3 minutes)
- Visual Search (runtime 2.20 minutes)

EBSCOadmin Tutorials

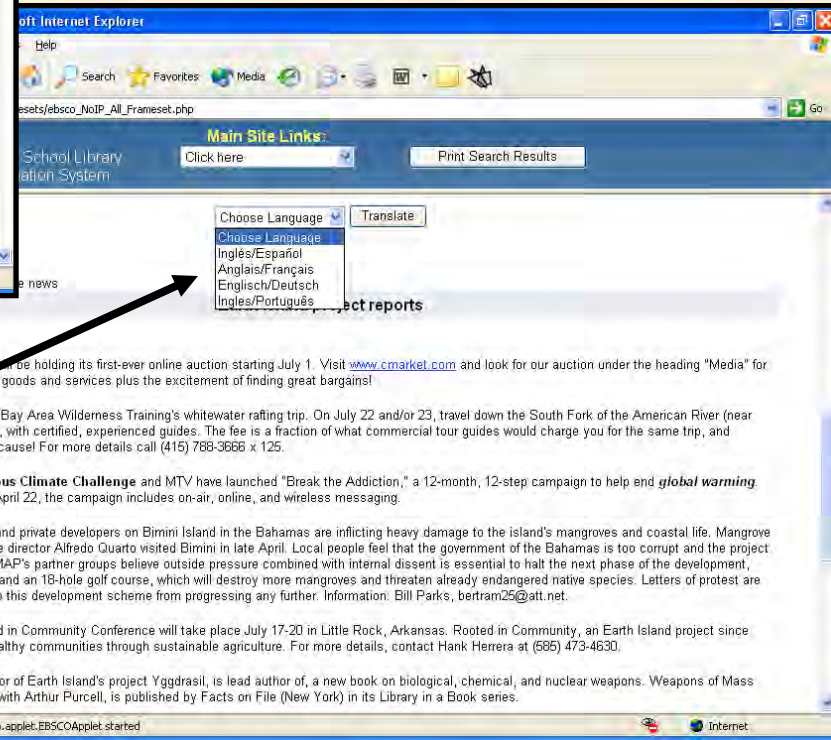
# ESL Options



EBSCO interfaces can be translated into various languages.

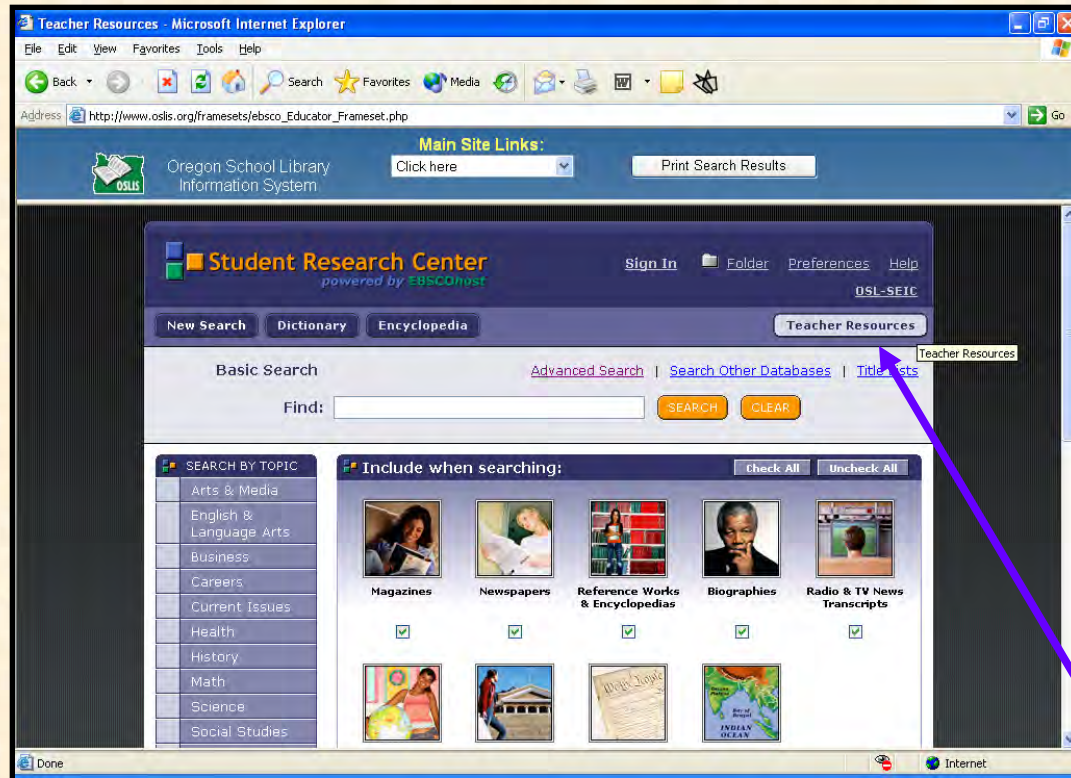
The articles retrieved will be in English.

To translate the articles you must open the actual article and then select from the languages available.





# Professional Resources too!



Don't forget to use these resources for your professional needs too! Access appropriate databases via the **Teacher Resources** tab in KS / SRC / All Databases or from the link on the Librarian & Teacher page.



# Search Options

These databases search 100's of publications including ERIC for relevant information.

A screenshot of a Microsoft Internet Explorer browser window displaying the 'Teacher Resources' page of the Oregon School Library Information System (OSLIS). The browser's address bar shows the URL 'http://www.oslis.org/framesets/ebsco\_Educator\_Frameset.php'. The page features a search bar with the text 'Find:' and a 'SEARCH' button. Below the search bar are radio button options for 'All', 'Academic Search Premier', 'ERIC', and 'Professional Development Collection'. A purple arrow points from the text above to the search bar. To the right of the search bar is a 'Limit your results:' section with checkboxes for 'Full Text', 'References Available', and 'Scholarly (Peer Reviewed) Journals', and a 'Published Date' field with dropdown menus for 'Month' and 'Yr'. The page also includes a 'Main Site Links' section with a 'Click here' dropdown and a 'Print Search Results' button. The browser's status bar at the bottom shows 'Done' and 'Internet'.

(You can search by DATE to keep up with the most current research.)



# Teacher Resource Examples

**OSIS - Oregon School Library Information System - Microsoft Internet Explorer**

Address: <http://www.osis.org/secondary/index.php?page=citePlagiarism>

**Oregon School Library Information System**

Main Site Links: [Click here](#)

Mid & High School Home | Research Process | Search Strategies | Gathering & Organizing | Beyond Surfing | Evaluating Information | **Citing Sources** | Presenting Results | Online Tools

**How to Cite Sources** (based on MLA style)  
Click here to use Citation Maker

**Plagiarism**

What is plagiarism?  
Plagiarism is the act of using another person's ideas or expressions in your writing without acknowledging the source. To plagiarize is to give the impression that you have written or thought of something that you have, in fact, borrowed from someone else. The Web makes it more tempting to plagiarize ideas because copying and pasting is so simple. However, the Web makes it easier for teachers to check particular and locating sources that

It is illegal, unethical, and failure for the course.

Plagiarism can take several forms:

- Copying any direct quotation without crediting your source.
- Paraphrasing of a book or article without crediting the author.
- Copying another person's work.

You may avoid plagiarism by:

- Acknowledging borrowing.
- Quoting accurately.
- Paraphrasing material.

**Student Resources**  
Start here ↓

- EBSCO Student Research Center
- All EBSCO Databases
- The Oregonian NewsBank Oregonian Lexile: 1230
- L-Net: Chat with a Librarian
- Quick Reference Links

Selected web sites indexed by subject

---

**OSIS - Oregon School Library Information System - Microsoft Internet Explorer**

Address: <http://www.osis.org/secondary/index.php?page=presentResults>

**Links to Presentation Resources:**  
These sites will open in a new window. Close the window to return to this page.

Low Tech	Scoring Guides	How-Tos
Written Report	Scoring Guide for Reports, Scoring Rubric	Written Report Guidelines
Poster/Presentation Board	Poster Scoring Guide example 1, example 2	Presentation Board Guidelines
Diorama	Diorama Rubric	Diorama Directions and Guidelines
Oral Report	Oral Report Scoring Guide	Guidelines for Oral Reports
Debates/Panel Discussions	Controversial Issue Scoring Guide	
Performing Arts (drama, scene, musical composition, etc.)	Instrumental Scoring Guide, Skit Scoring Guide	

---

**Assessment for Integrated Task: Controversial Issue - Microsoft Internet Explorer**

Address: [http://www.bcpl.net/%7Eesullivan/modules/tips/rubrics\\_sec/contr\\_issue2.html](http://www.bcpl.net/%7Eesullivan/modules/tips/rubrics_sec/contr_issue2.html)

**Performance Task Assessment List**  
**Integrated Task: Controversial Issue**

Element	Possible Points	Earned Assessment	
		Self	Teacher
<b>The Positions</b>			
The main idea is stated for the first position.			
That main idea is supported by relevant details.			
The main idea is stated for the second position.			
That main idea is supported by relevant details.			
<b>Information Sources</b>			
Information sources are evaluated as to what is fact and fiction.			
Information sources are evaluated as to what is objective and biased.			
The evaluation of the information sources is explained and justified.			
<b>Questions for Further Study</b>			

---

**OSIS - Oregon School Library Information System - Microsoft Internet Explorer**

Address: <http://www.osis.org/secondary/index.php?page=presentResults>

Scoring Guides	How-Tos
	Using Bar'n'Coder
Page Guidelines, Scoring	Classroom Webpages, Keyboard Creator, Dreamweaver
Slide Show Rubric	Guidelines for Electronic Presentations
	LiveSlideShow Tutorial
	RealSlideShow User's Guide
	AppleWorks Tutorial
Scoring Guide	Video Guidelines, iMovie Tutorial

Don't miss these scoring examples from the **Presenting Results** tab. You can save them and edit to meet your criteria.



# Journal Alerts

**Subject:** Fw: SLJ newest publication

**From:** Patty Sorensen <pdsorensen@comcast.net>

**Date:** 7/11/2006 7:04 PM

**To:** SORENSEN Patty <Patty.Sorensen@state.or.us>

**EBSCOhost Alert Notification**

**To:** pdsorensen@comcast.net  
**Subject:** SLJ newest publication

A new issue of *Book Links* is available. The Alert was run on the Professional Development Collection database.

*Note: The links include all articles in this issue added to the database and may not contain every item in the published issue.*

**Alert Run Date:** 6/28/2006 12:05:16 AM  
**Alert Name:** Book Links  
**Database:** Professional Development Collection

**RSS Feed:** <http://rss.epnet.com/AlertSyndicationService/Syndication.aspx/GetFeed?guid=683887>

Record	Results
1.	<a href="http://search.epnet.com/direct.asp?AN=21276639&amp;db=tfh&amp;site=ehost">Celebrating 15 Years of Book Links</a> . By: Tillotson, Laura. <i>Book Links</i> , Jul2006, Vol. 15 Issue 6, p4-4, 2/3p; Abstract: The article introduces the topics published within the issue and talks about the 15th anniversary celebration of "Book Links" in the U.S. The author expresses her gratitude for the patrons of children's books, which are featured in the publication. The issue includes the articles "15 Classic Read-Alouds" and "Two of a Kind." (AN 21276639) <a href="http://search.epnet.com/direct.asp?AN=21276639&amp;db=tfh&amp;site=ehost">http://search.epnet.com/direct.asp?AN=21276639&amp;db=tfh&amp;site=ehost</a>
2.	<a href="http://search.epnet.com/direct.asp?AN=21276639&amp;db=tfh&amp;site=ehost">Two of a Kind</a> . By: Stern, Susan. <i>Book Links</i> , Jul2006, Vol. 15 Issue 6, p6-8, 3p; Abstract: The article reviews several books on children's literature including "The Sea, the Storm and the Mangrove Tangle," by Lynne Cherry, "Mike Mulligan and His Steam Shovel," by Virginia Lee Burton, "Fireboat: The Heroic Adventures of the John J. Harvey," by Maira Kalman, "Harold and the Purple Crayon," by Crockett Johnson and "Christmas Tapestry," by Patricia Polacco. (AN 21276639) <a href="http://search.epnet.com/direct.asp?AN=21276639&amp;db=tfh&amp;site=ehost">http://search.epnet.com/direct.asp?AN=21276639&amp;db=tfh&amp;site=ehost</a>

Can be set up so when the newest issue is published, you receive an email with the contents hyperlinked. Watch the EBSCO tutorial/ask your library staff to help you with this feature.

(Some articles may be "embargoed" or not full text for a short period.)



# Search Alerts

If you find a search string that really works for your research, setting a **Search Alert** would result in that search being run for you on a time frame you set (like once weekly) so that you can locate the newest research being published about your topic. You will receive an email alert, click on the links, and retrieve the articles.

"lung cancer" And treatment\* And TX "United States"

The screenshot shows a web browser window displaying search results from EBSCO All Databases. The page title is "EBSCO All Databases - Microsoft Internet Explorer". The address bar shows the URL: [http://www.oslis.org/framesets/ebSCO\\_NoIP\\_All\\_Frameset.php](http://www.oslis.org/framesets/ebSCO_NoIP_All_Frameset.php). The page header includes "Oregon School Library Information System" and "Main Site Links: Click here" and "Print Search Results".

The search results are displayed in a table with the following columns: a left sidebar with navigation links, a main column with article details, and a right column with "Add" buttons. The navigation links in the sidebar include: Humans, Female, Male, Middle Aged, Aged, Adult, Lung Neoplasms drug therapy, Treatment Outcome, Lung Neoplasms pathology, and LUNGS -- Cancer.

The main column contains a list of 7 articles:

2. [Synchronous pulmonary carcinoma and pleural diffuse malignant mesothelioma.](#) (eng; includes abstract) By Allen TC, Archives Of Pathology & Laboratory Medicine [Arch Pathol Lab Med], 2006 May; Vol. 130 (5), pp. 721-4; PMID: 16683892  
[PDF Full Text](#)
3. [The role of pulmonary resection in small cell lung cancer.](#) (eng; includes abstract) By Chandra V, Mayo Clinic Proceedings. Mayo Clinic [Mayo Clin Proc], 2006 May; Vol. 81 (5), pp. 619-24; PMID: 16706259  
[PDF Full Text](#)
4. [Some Sociodemographic and Diagnostic Characteristics of Military Patients Treated in the Department of Medical Oncology Gülhane Military Medical Academy.](#) By: Han Acikel, Cengiz; Kir, Tayfun; Komurcu, Seref; Kilic, Selim; Ahmet, Col; Rzayev, Maharet; Arpaci, Fikret; Ozturk, Bekir; Ogur, Recai; Ataergin, Selmin; Kuzhan, Okan; Hasde, Metin. Military Medicine, May2006, Vol. 171 Issue 5, p420-424, 5p; Language: English; (AN 20942077)  
[PDF Full Text](#) (560K)
5. [Does reimbursement influence chemotherapy treatment for cancer patients?](#) (eng; includes abstract) By Jacobson M, Health Affairs (Project Hope) [Health Aff (Millwood)], 2006 Mar-Apr; Vol. 25 (2), pp. 437-43; PMID: 16522584  
[PDF Full Text](#)
6. [Stereotactic body radiation therapy: a treatment in need of basic biological research.](#) (eng) By Timmerman RD, Cancer Journal (Sudbury, Mass.) [Cancer J], 2006 Jan-Feb; Vol. 12 (1), pp. 19-20; PMID: 16613657  
[PDF Full Text](#)
7. [Characteristics of patients who developed radiation pneumonitis requiring steroid therapy after stereotactic irradiation for lung tumors.](#) (eng; includes abstract) By Fujino M, Cancer Journal (Sudbury, Mass.) [Cancer J], 2006 Jan-Feb; Vol. 12 (1), pp. 41-6; PMID: 16613661



# More

The OSLIS website also provides you with access to the **Oregonian** full text from 1988

NewsBank Oregonian - Microsoft Internet Explorer

Address: http://www.oslis.org/frameSETS/ebSCO\_Oregonian\_FrameSet.php

Main Site Links: Click here | Print Search Results

OSLIS Oregon School Library Information System

NewsBank America's Newspapers

Interface language: English

SEARCHING: Oregonian, The (Portland, OR)

for: [input field]

return: Most recent matches first

timeframe: all years

custom date: [input field]

SEARCH [button] Advanced Search

Search Hints: To find an exact match or phrase, use quotes. Custom date example: Jan 1, 2000 - Feb 3, 2000.

BROWSE AN ISSUE

most current issue: 2006

the publisher: 2005, 2004, 2003, 2002, 2001, 2000, 1999, 1998, 1997

date: mm/dd/yyyy

The (Portland, OR)

Date Range: (9/1/1987-Current)

Media Type: Newspaper

publishing Frequency: Daily

irculation: 342040

verage: Full-text: electronic edition of record of publication

lex: Terms from Publisher: Y

embership Group: Advance

TL: www.oregonian.com

SN: 8750-1317

number: 2077

and **L-Net** which is an online reference service available 24/7 for all Oregonians.

Patron - Microsoft Internet Explorer

Address: http://www.questionpoint.org/crs/servelet/org.odc.home.TFSredirect?virtcategory=11768

HOME ABOUT HOURS LIBRARIES FOR SCHOOLS FOR LIBRARIES HELP

**About L-net**

**Who am I talking to?**

L-net is primarily staffed by librarians from all over Oregon.

You can learn more about who we are by looking at our [profiles](#).

There aren't any Oregon librarians online right now. Librarians outside of Oregon will be able to help you.

Evenings, weekends, and early mornings you will be connected to librarians all over the United States. You may also be connected to a librarian from outside Oregon if L-net is busy.

The person you are talking to may not be local, will still be able to help you with

Please enter your name (required)

To receive a transcript of this session, please enter your email address

Confirm Email Address

Please enter your zip code (required)

Please choose your grade (required): Kindergarten

How may we help you (required)?

Connect [button] Exit [button]



6-12+ OS LIS Resources

<http://www.oslis.org>